



V1.6 Update Notes

Copyright Notice

Copyright ©1987-2011 by WestDev Ltd. All rights Reserved. E & O E

WestDev Ltd

20 Miller Court
Severn Drive
Tewkesbury Business Park
Tewkesbury, Glos
GL20 8DN
UK

Email: info@stockitsoftware.com

Support Email: support@stockitsoftware.com

Web site: www.stockitsoftware.com

The product is licensed by WestDev Ltd to the original purchaser of the product for use only on the terms set forth in the WestDev Licence agreement. Copying, duplicating, selling or using the product contrary to these terms is strictly forbidden.

This Manual Copyright © 1987-2011 WestDev Ltd. All Rights reserved. No part of it may be copied, photocopied, reproduced, translated, or reduced to any electronic medium or machine-readable form without WestDev Ltd. prior written permission.

Information in this manual is subject to change without notice and does not represent a commitment on the part of the vendor.

Stockit, Stockit For Windows, Number One Systems and Pulsonix are trademarks of WestDev Ltd. All other trademarks acknowledged to their rightful owners.

While every care has been taken in the preparation of this manual WestDev Ltd cannot be held responsible for any errors or omissions within it. If informed we will add comments and features that you may like to see written which may help others using this manual. Please send your comments through the technical support desk.

Manual dated: 17/11/11 Issue 1

4 Stockit V1.6 Update Notes

Software Licence Agreement WestDev Ltd

This document contains the WESTDEV LTD SOFTWARE LICENSE AGREEMENT which will govern the use of the Westdev products supplied with it. You agree to the terms of this agreement by the act of opening the sealed package which contains the storage media on which the software is recorded. Do not open the sealed package without first reading, understanding and agreeing the terms and conditions of this agreement. If you do not agree to the license conditions you may return the SOFTWARE for a full refund before opening the sealed package.

1. LICENSE AGREEMENT

Ownership of the WESTDEV Software Package and all its constituent parts supplied by Westdev Ltd ("LICENSED SOFTWARE") is not transferred to the Customer. Westdev Ltd hereby grants you, the LICENSEE, a non-exclusive license to have, at any time, as many copies of the LICENSED SOFTWARE "in use" as you have Licenses. The number of copies "in use" includes copies loaded into computer memory (i.e. "running") but does not include copies loaded in a network server for the sole purpose of distribution to other computers. LICENSEE shall agree to have a reasonable mechanism or process in place to ensure that the number of persons using the LICENSED SOFTWARE at any time does not exceed the number of Licenses granted to you.

2. OWNERSHIP OF SOFTWARE

As the LICENSEE, you own the magnetic, optical or other physical media on which the LICENSED SOFTWARE is originally or subsequently recorded or fixed, but an express condition of this License is that Westdev Ltd and/or the copyright owner retains title and ownership of the LICENSED SOFTWARE recorded on the original media and all subsequent copies of the SOFTWARE, regardless of the form or media in or on which original and other copies may exist. This License is not a sale of the original SOFTWARE or any copy.

3. COPY RESTRICTIONS

This LICENSED SOFTWARE and all accompanying written materials and all other constituent parts are the subject of copyright. Unauthorised copying of the LICENSED SOFTWARE, including software which has been modified, merged, or included with other software, or of the written materials is expressly forbidden. You may be held legally responsible for any copyright infringement which is caused or encouraged by your failure to abide by the terms of the License.

4. TRANSFER OF LICENSED SOFTWARE

The Customer may transfer the LICENSED SOFTWARE provided that (i) this Software License Agreement is transferred with the LICENSED SOFTWARE, (ii) the transferee fully accepts the terms and conditions of this Agreement, and (iii) all complete or partial copies of the LICENSED SOFTWARE, including copies on data storage devices are also transferred (or destroyed).

5. MODIFICATION

You may not otherwise modify, alter, adapt, merge, de-compile or reverse-engineer the LICENSED SOFTWARE, and you may not remove or obscure any Westdev Ltd Copyright or Trademark notices. You must use all reasonable efforts to protect the LICENSED SOFTWARE, diskettes, and documentation from unauthorised use, reproduction, distribution or publication, or otherwise in violation of applicable law. Please contact our Customer Service department if you become aware of violations of Westdev Ltd's Copyright.

6. TERMINATION

The License is effective until terminated. You may terminate it at any time by destroying the LICENSED SOFTWARE and all complete or partial copies thereof. It will also terminate if you fail to comply with any term or condition of this Agreement. You agree upon such termination to destroy the LICENSED SOFTWARE and all complete or partial copies thereof.

7. WARRANTIES

No warranties are expressed or implied with respect to the LICENSED SOFTWARE described, its quality, performance, accuracy or suitability for any purpose. In no circumstances will the copyright holder be liable for direct, indirect, incidental or consequential damages resulting from the use of this SOFTWARE.

8. OTHER SOFTWARE

The supplied disks may contain software whose copyright is owned by third parties. This license agreement shall apply equally to this software except where the terms of this agreement are specifically modified by the copyright holder(s). Such modification(s) will be included in a machine readable file on the supplied media.

9. GOVERNING LAW

The Governing Law of this Agreement shall be that of England.

Contents

CONTENTS	5
CHAPTER 1. GETTING STARTED	7
Introduction.....	7
Installing the New Version.....	7
Backup your Database first.....	7
Operating System Support for Windows 7.....	7
CHAPTER 2. FUNCTIONAL CHANGES	9
Updated User Interface	9
Customisable Toolbars and Shortcut keys	9
Customise dialog	9
Customising Toolbars	10
Shortcut Keys	10
Customise Menu.....	11
Customise Options.....	12
Updated User Interface	12
Tabbed Windows.....	13
Easy Access to Users Guides.....	13
User Defined Attributes	14
Copying values from the grid.....	16
Report Builder Improvements	16
FIFO Calculation in Update Stock Costs from Goods-In Costs.....	17
Partial Ordering.....	18
Fast Searching Improvements	19
Additions to the Import Wizard.....	19
Character Increases from 100 to 255	20
Connection to the Pulsonix PCB Design System.....	20
Creating Stockit format Parts Lists from Pulsonix.....	22

Chapter 1. Getting Started

Introduction

Stockit version 1.6 provides new and additional features to those available in the previous version of the product. It also consolidates all fixes for problems reported since the previous update release. The changes made are listed in the following chapters.

Installing the New Version

This update is provided as a self-unpacking installation program that will automatically start the **Setup** program needed to install the modified files. Installation will start automatically once download from the Internet is complete or from the installation CD.

Backup your Database first

Although installing the new version does not affect your existing database it is highly recommended that you make a separate backup copy of your database to another location before you install the new version.

Operating System Support for Windows 7

Stockit version 1.6 is now fully supported under Windows 7.

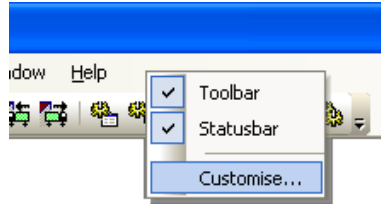
Note: No versions of Stockit earlier than version 1.6 can be supported under the Windows 7 operating system.

Chapter 2. Functional Changes

Updated User Interface

Customisable Toolbars and Shortcut keys

Clicking the **Customise...** button on the Stockit furniture (the edge of the program window) or from the **Tools** menu will open up the **Customise** dialog.



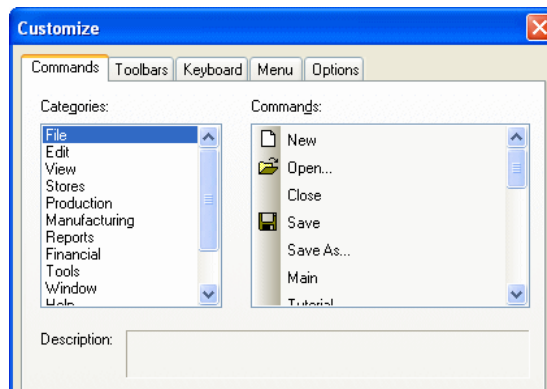
From this dialog, you can customise various aspects of the Stockit program, for example, shortcut keys, toolbar buttons or tooltips.

Customise dialog

The **Commands** dialog is used to add any command used in Stockit onto a Toolbar or menu.

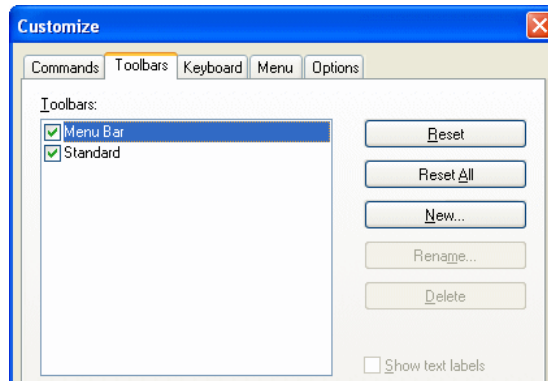
Within the Commands tab, there is a list of command **Categories** each of which will display a list of commands when selected. The **All Commands** item (at the bottom of the **Categories** list) will show all commands in all categories. Selecting a category, lists all the commands defined in that category.

Selecting a command will display a description of its function. A selected command may be dragged, by pressing and holding down the left-hand mouse button, and dropped on to any visible toolbar or menu. Dragging the command over a menu bar item will cause the corresponding menu to drop down allowing the command to be placed within that menu. The same command may be placed on more than one toolbar or menu.



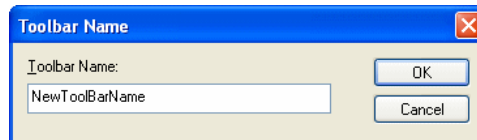
Customising Toolbars

Within the **Toolbars** tab you may change toolbar visibility, add new toolbars, delete existing custom toolbars and reset default toolbars. A new custom toolbar will appear, 'floating' over the application main window, ready to have your chosen commands dragged on to it. Alternatively click **Cancel** to abort the creation of a new toolbar.



How to create a new user defined Toolbar

The Toolbar Name dialog appears when the **New** button on the Toolbars tab is clicked. Enter the name of the new toolbar then click **OK** to confirm you wish to create the toolbar.



Shortcut Keys

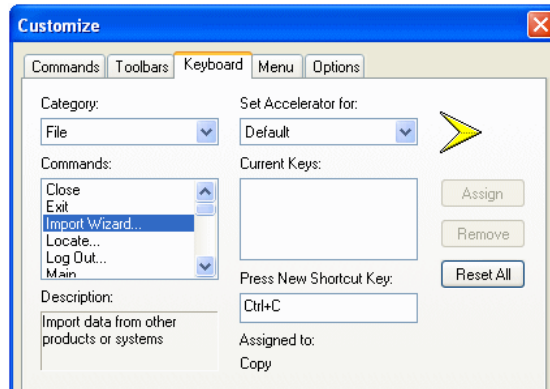
Shortcut keys offer an alternative method of performing actions for users who prefer the keyboard to the mouse. Any command may be assigned to a given key or keyboard combination. The command can then be performed simply by entering the assigned shortcut key.

The application comes with a predefined set of Shortcut Keys for its most commonly used operations. These are however, only a default set and may be changed, removed or added to according to your own personal preferences using the **Keyboard** tab on the **Customise** dialog.

If a command, to which a Shortcut Key is assigned, is available from a menu, the Shortcut Key combination is displayed alongside the option in the menu. Also, optionally Shortcut Keys can be shown in the tooltips, displayed for toolbar buttons.

Modifying Shortcut Keys using the Keyboard dialog

The Keyboard dialog allows you to query, remove or add to the Shortcut Keys currently assigned to commands.



The **Category**: list, in the top left of the dialog, allows you to restrict the list of commands shown to only those in the chosen category. Select **All Commands** from the drop down list to see a complete list.

The **Commands**: list shows the commands to which you can assign a shortcut key. The currently selected command is shown in the box at the top of the list.

The **Description** box displays a brief description of the currently selected command.

The **Current Keys** list shows any shortcuts currently assigned to the command. You can assign more than one shortcut to the same command, but you cannot assign the same shortcut to different commands. Clicking the **Remove** button removes the currently selected shortcut.

You can also identify a command by its currently assigned shortcut. To do this, type the key or key combination (**Ctrl+C**, for example) into the **Press New Shortcut Key**: box. If a command is assigned, it will be displayed below **Assigned to**: as text.

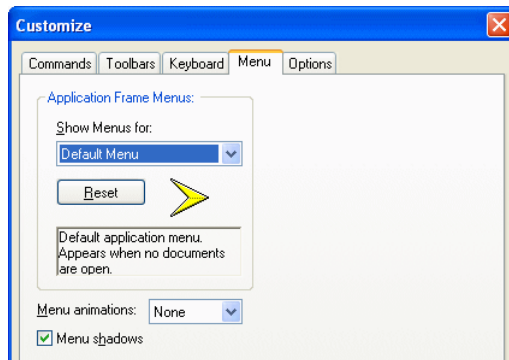
Assigning Shortcut Keys

To assign a shortcut, place the cursor into the box positioned below the prompt **Press New Shortcut Key**: then press the desired key combination. Clicking the **Assign** button will assign this shortcut key to currently selected command. If the key is already assigned to another command it will be displayed below **Assigned to**:

The **Reset All** button resets all shortcuts to the shortcut defaults.

Customise Menu

Use features on this tab to define how the menus look and to reset them to the default settings.



12 Stockit V1.6 Update Notes

Show Menus for: there is a standard set of menus currently in Stockit and this will always be shown as the Default Menu in the drop down list.

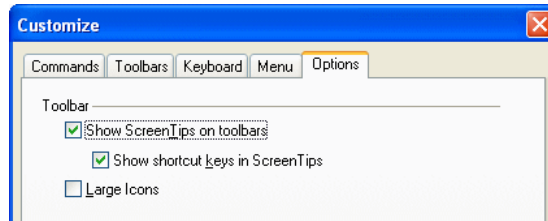
Reset This button will reset the Default Menu back to its original default settings. Any user customisation will be lost.

Menu animations: this allows you to define how the menus are revealed once selected. You can choose Unfold, Slide and Fade as possible options from the drop down list.

Menu shadows this specifies whether or not a menu is displayed with a shadow.

Customise Options

Use this tab to define how the Toolbar will look.



Toolbar

Show ScreenTips on toolbars

This specifies whether or not tooltips are to be shown when the mouse pointer is over toolbar buttons or not.

Show shortcut keys in ScreenTips

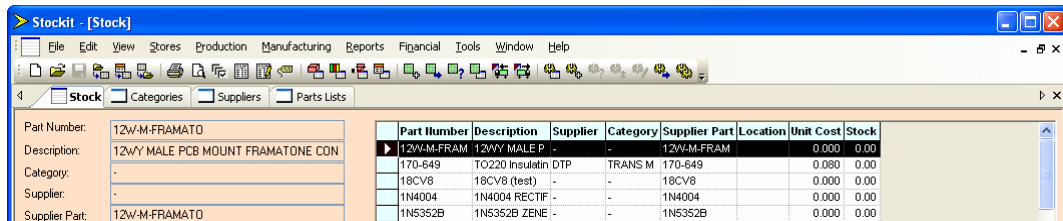
This specifies whether or not the tooltips should include equivalent shortcut keys for toolbar buttons where defined.

Large Icons

This specifies whether or not toolbars should be displayed with the larger size icons.

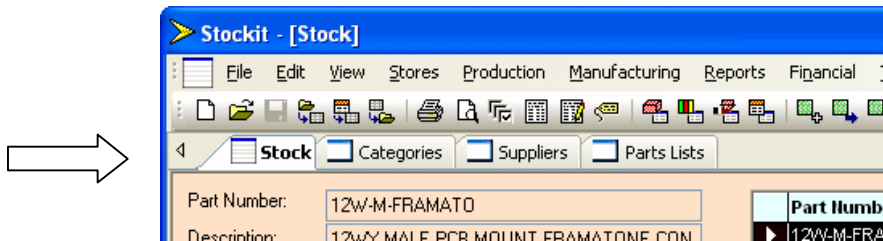
Updated User Interface

The user interface has been updated in several respects.

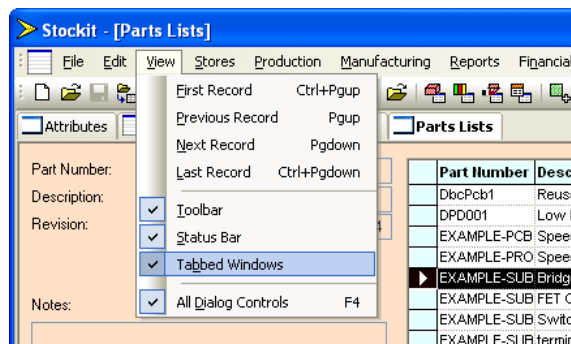


Tabbed Windows

Tabbed windows have been added for improved speed of access to open forms. The window tabs are displayed across the top of the interface just below the default positions of the menu and toolbars, and show the form name. The current active window, the one at the front, is shown in bold type-face. To move easily between each open form, simply click on the tab to bring it to the front.



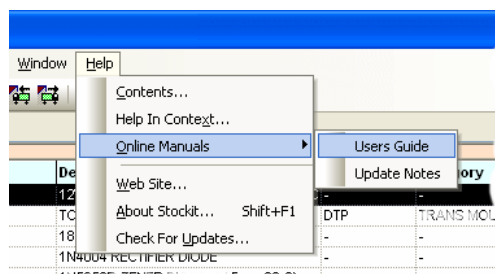
These tabbed windows can be switched off if not required by selecting the **Tabbed Windows** option from the **View** menu. A 'tick' mark will be displayed next to the menu option to indicate whether it is active or not.



By default, tabbed windows will operate with each of the form windows maximised within the application window, but this is not compulsory. The form windows can be switched to a **Cascade** or **Tiled** layout by using the options available on the **Windows** menu.

Easy Access to Users Guides

The **Help** menu now includes entries for PDF versions of the **Stockit Users Guide** and **V1.6 Updates Notes**. To access these, simply select the manual required from the sub menu under **Manuals>**. To view these PDF files, you will need the Adobe Acrobat viewer installed. This is available free of charge from www.adobe.com



User Defined Attributes

There is a new **Attributes** table available for Stock items. This can be used in addition, or instead of the three user-defined fields on the Stock form.

The 'key' field used for this form is the Part Number, you can sort by Part Number but you are not able to edit it from here. When a stock item is selected from the Stock form, it will be pre-selected in this form for ease of locating.

The screenshot shows a window titled 'Stock Attributes' with a 'Save' button, a 'Close' button, and a checked checkbox for 'All Stock Items'. Below is a table with the following data:

Part Number	Tol	Value	Wattage	Obsolete	Footprint	New...
RES100K-0W25	5%	100K	0.25W	N	R 0.400	
RES10K-0W25	5%	10K	0.25W	N	R 0.400	
RES1K2-0W25	5%	1K2	0.25W	N	R 0.400	
RES1K8-0W25	5%	1K8	0.25W	N	R 0.400	
RES2K2-0W25	5%	2K2	0.25W	N	R 0.400	
RES470K-0W25	5%	470K	0.25W	N	R 0.400	
RES47K-0W25	5%	47K	0.25W	N	R 0.400	
RES4K7-0W25	5%	4K7	0.25W	N	R 0.400	
RES8K2-0W25	5%	8K2	0.25W	N	R 0.400	
RES0R22-2W5	1%	22	2.5W	N	R 0.600	
MRS16 220R	1%	220	0.125W	N	R0805	
MRS16 6K8	1%	6K8	0.125W	N	R0805	
MRS16 5K6	1%	5K6	0.125W	N	R0805	
RES220R-0W25	1%	220	0.25W	N	R 0.400	
MRS16 3K3	1%	3K3	0.125W	N	R0805	
RES470R-0W25	1%	470	0.25W	N	R 0.400	
MRS16 1K	1%	1K	0.125W	N	R0805	
MRS16 100K	1%	100K	0.125W	N	R0805	
RES0R1-2W5	1%	1	2.5W	N	R 0.600	
RES560R-0W25	1%	560	0.25W	N	R 0.400	

Working with Attributes Names

There are two aspects to an attribute; the **attribute name** (Tol, Wattage, Value etc.) and its **value** (100K, 2%, 5%, 0.25W etc.).

To **add** a new **attribute name**, click once on the attribute header **New...** and type the name required, then either press **<Enter>** or select another cell in the grid to accept the name. The name will change to a bold font to show it has been accepted.

To **delete** an Attribute Name (and the column under it plus any assigned values in that column), select the attribute name and press the **** key on the keyboard. The column will be removed.

Editing Attribute Names

Attribute Names can be **edited** by selecting the name and using a **<Ctrl+double-click>**. Edit the name once highlighted then press **<Enter>** to accept it.

Working with Attributes Values

To add a new attribute **value**, click once on the corresponding attribute/stock item cell. Type in the value required. Press **<Enter>** or select another cell to confirm the value. Values can be numeric or alpha characters or a combination of both.

To **edit** a value, use a single click on the cell and type the new value. This will replace the whole value. To modify the existing value, double-click in the cell and use the left and right keys on the keyboard or position the cursor within the text string. Make the edit then press **<Enter>**. The **** and **<Backspace>** keys can also be used to edit the text.

To **delete** an Attribute Value, select the value or multiple-select values and press the **** key on the keyboard. You can also use **<Ctrl+select>** or **<Shift-select>** to pick multiple cells. Once selected, you can delete their values or Paste in new ones.

Using Copy/Paste in the grid cells

Copy and **Paste** can be used to add values into single or multiple cells at the same time. Copied values can be pasted into selected cells in columns and across rows or both. Copied values can be taken from within the Attributes form or from an external source, such as Excel or Notepad for example.

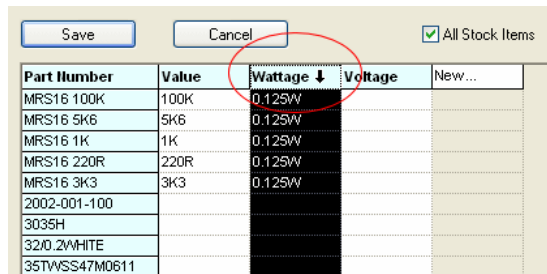
To paste the same value into multiple cells, copy the value required first. Select the cells required in the attribute grid and press the shortcut <Ctrl+V> (Paste) from the keyboard or the **Paste** option from the **Edit** menu.

Undo and Redo in the Attributes form

Undo and **Redo** can be achieved using the shortcut keys <Ctrl+Z> or <Ctrl+Y> and will undo/redo any attribute names or values entered. These two commands are only available in this form. They are only available until the **Save** button is pressed or until the **Close/Cancel** button is pressed. Redo does not remember previous editing sessions, only the current one.

Sorting Columns

You can sort any column by double-clicking on the Attribute header. Double-clicking the first time will sort the list in ascending order, double-clicking it again will sort it in the opposite direction, i.e. descending.



Part Number	Value	Wattage ↓	Voltage	New...
MRS16 100K	100K	0.125W		
MRS16 5K6	5K6	0.125W		
MRS16 1K	1K	0.125W		
MRS16 220R	220R	0.125W		
MRS16 3K3	3K3	0.125W		
2002-001-100				
3035H				
32/0 2/WHITE				
35TVSS47M0611				

Saving Attributes

Once you have finished adding or editing attributes, you must save them. To do this, click the **Save** button at the top of this form. Once pressed, the button will be greyed out and the **Close** button will be active, use this button to close this form.

Before **Save** has been pressed, the **Close** button will show as **Cancel**. Use this to close the Attributes form without saving the attribute names or values from your current session.

All Stock Items uncheck this check box to only show the Stock items which have attributes attached to them. Any stock item that has at least one attribute value will be displayed in this list. To add attributes to items not shown it is necessary to switch back to All Stock Items mode.

Searching by Attribute Names

Unlike the three user-defined fields on the Stock form, the fields in the Attributes table cannot at present be used for searching and filtering of the stock form. This is also the case in the **Report Builder**.

Hyperlink Attributes

A value added for an attribute can be a **hyperlink** containing a reference to a **web page**, an **external document** or an **executable** program, this referenced item can exist on the Internet.

A **hyperlink** can be specified as a full path e.g. c:\temp\datasheet.pdf or C:\Documents and Settings\All Users\Documents\Stock\part.doc, or can be entered relative to the database location, e.g. documents\datasheet.pdf. Say, for example, you want to view images of your stock items and

your database is located at c:\db, you could set up a folder of image files at c:\db\pictures and then reference them using an attribute with a relative path such as pictures\part.gif.

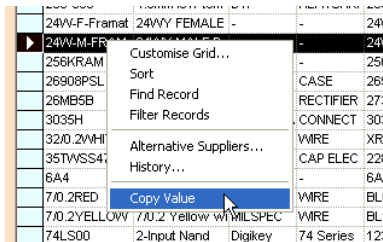
Part Number	Value	Wattage	Voltage	Hyperlink	Images	New...
MRS16 100K	100K	0.125W		C:\Datasheets\MRS16100K.pdf	pictures\mrs16100k.gif	
MRS16 1K	1K	0.125W				
MRS16 220R	220R	0.125W				
MRS16 3K3	3K3	0.125W				
MRS16 5K6	5K6	0.125W				
170-649						

To activate a hyperlink, position the cursor over the attribute value then press <Ctrl+click>.

For a hyperlink to reference an **executable** program, it must include the .exe extension in the file name which must be reachable by the system, e.g. notepad.exe. The executable can be accompanied by parameters which, if specifying a path to a file, may be a relative path as described above, e.g. excel.exe info\part.xls.

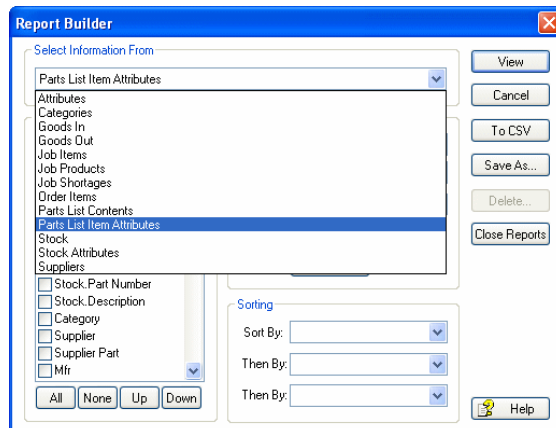
Copying values from the grid

Where a grid is used to displays records, clicking on a row generally selects and highlights the entire row of information. Using the Copy command, or its shortcut key (<Ctrl+C> by default), will copy the entire row of text to the Windows clipboard. If you wish to copy the text from a single field in the record, perhaps to paste into a search or filter elsewhere, right-click over the value and select **Copy Value** from the context menu.



Report Builder Improvements

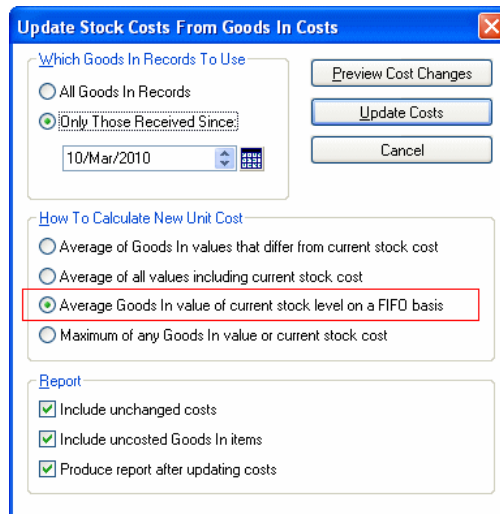
The **Report Builder** has been enhanced to include three new additional information sources; **Attributes**, **Stock Attributes**, **Parts List Stock Attributes** and **Job Shortages**. These can be selected from the **Select Information From** drop down list as the basis for your report.



Selecting **Attributes** will allow fields from the new Attributes table to be reported for stock items. Using **Stock Attributes** will additionally allow fields from the Stock table to be combined with those from Attributes and reported. The **Parts Lists Stock Attributes** selection will enable you to write out all Stock Attributes associated with a particular Parts List. The **Job Shortages** selection is useful because it allows you to report shortage information combined with additional fields from the Stock table such as current stock level or any of your custom fields.

FIFO Calculation in Update Stock Costs from Goods-In Costs

A new **Average Goods In** calculation has been added to the **Update Stock Costs From Good In Costs** dialog. This will give you an average goods-in value of your current stock based on the **First In First Out principle (FIFO)**.



This is calculated as the average unit cost of just the Goods In records relating to the items still currently in stock, assuming stock is booked out on a First In First Out basis.

For example, if the most recent deliveries of part M3 were:

10 on 8th Feb @ £5
 5 on 6th Feb @ £4
 20 on 4th Feb @ £3
 30 on 2nd Feb @ £2
 50 on 1st Feb @ £1

And the current stock level for M3 is 30, the updated cost would be calculated as:

$$(10 * 5) + (5 * 4) + (15 * 3)$$

$$= 3.833$$

30

Using this option means the updated cost is not skewed by the cost of the earlier deliveries whose items have been already been issued.

Partial Ordering

On the **New Purchase Order Items** page (on the **Stores** menu), the option to place the purchase orders can now be run selectively with the added option to mark items for individual ordering.

By marking items, you can run partial ordering, for example if some known items are on long lead times.

Part Number: 236-305
 Description: 1.6mm DD Low temperature
 Qty to Order: 2.40 m
 Required Date:
 Expected Date:
 Supplier: DTP
 Supplier Part: 236-305
 Notes:

Approx Total Cost: £ 849.948

<input type="checkbox"/>	Part Number	Description	Supplier
<input checked="" type="checkbox"/>	20J2-J01-10J	10A Thermal Trip	DTP
<input checked="" type="checkbox"/>	236-305	1.6mm DD Low temperature Heat	DTP
<input type="checkbox"/>	200-000	4.0mm low temperature heatsh	DTP
<input type="checkbox"/>	2630EPL	Diecast Box	DTP
<input type="checkbox"/>	26M5B	25A 50V Bridge Rectifier	DTP
<input checked="" type="checkbox"/>	35TAVS270R11	47mfd 35V electrolytic	DTP
<input type="checkbox"/>	BLK101-30GS	Internally protected power mosfet	DTP
<input type="checkbox"/>	CLB300GTP	Green low profile LED lens and clip	DTP
<input type="checkbox"/>	CLB300RTP	Red low profile LED lens and clip	DTP
<input type="checkbox"/>	HLMF95G2	Green LED	DTP
<input type="checkbox"/>	RSCA701-VB-9-G	rocker switch Green	DTP
<input type="checkbox"/>	TL5R5410	REC flashing LED	DTP
<input type="checkbox"/>	EXAMPLE-PCB	Speed Controller PCB	FAC OF
<input type="checkbox"/>	EXAMPLE-SUB1	Speed controller bridge assemb	FAC OF
<input type="checkbox"/>	EXAMPLE-SUB2	FET controller	FAC OF
<input type="checkbox"/>	EXAMPLE-SUB3	Switch Assembly	FAC OF
<input type="checkbox"/>	EXAMPLE-SUB4	Terminal Block assembly	FAC OF
<input type="checkbox"/>	EXAMPLE-SUB5	Speed Control PCB with LEDs &	FAC OF
<input type="checkbox"/>	3035H	3MS solder Type Spade Connecto	MACRO
<input type="checkbox"/>	CG14RI ACK	7A 28M 3 pin male	MACRO
<input type="checkbox"/>	CG14RI LF	7Amm 28M 03 B 115 pin male	MACRO

Marked Items Only

Marked Items Only

When 'checked', this option allows you to process only certain items in the form and leave the others to do another time. In the grid there is a corresponding column of checkboxes which are used to mark the items you wish to include. The checkbox at the head of the column will check or uncheck all items in a single action.

With the required items marked, the **Place Items as Orders**, **Request Quotes for Items** and **Clear Items** actions, shown in the box alongside **Marked Items Only**, will only operate on those marked items and leave all unmarked items unaffected.

If the form is closed, any item marked will remain marked when the form is next re-opened.

Clear Items

This option allows you to quickly remove all the purchase items shown, effectively clearing your "shopping list", unless the **Marked Items Only** option is in use in which case only marked items will be cleared.

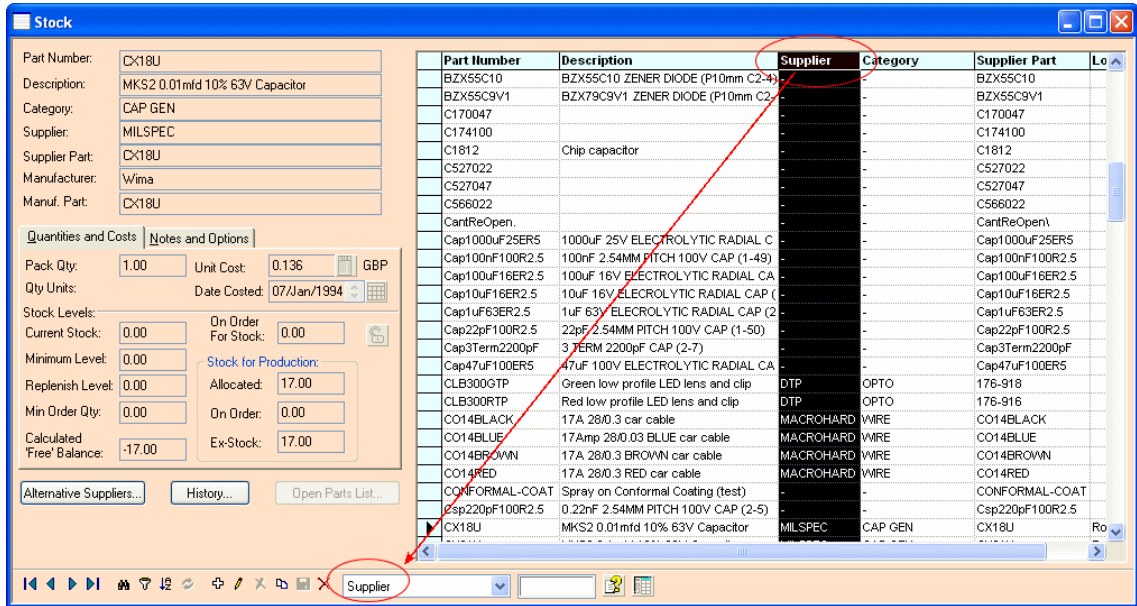
Multiple Partial Orders

It is now possible to add multiple occurrences of the same Part Number to the list of items to be ordered. This will enable you to create separate order quantities of the same item and schedule them for different delivery dates.

Fast Searching Improvements

Priming the Navigation bar

Clicking a column header in the grid will now additionally prime the column as the current search field in the **Navigator Bar**.

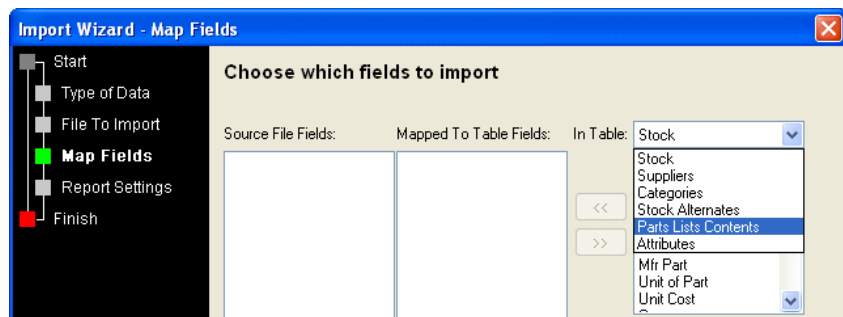


Find Next

Also, having found the first matching record when the search value was typed, it is now possible to find the next and subsequent matching records by typing **<Ctrl+Enter>** (similar to the **Find Next** button when using the **Search** dialog). This can be useful when searching columns which are not the current sort field.

Additions to the Import Wizard

When using the **Import Wizard**, you can now additionally import data for **Parts Lists** and the new **Attributes** table.



For example, Parts List Contents data showing the fields that can be mapped in the Import Wizard, can be generated using Stockit’s Report Builder with the Parts List Contents source setting. A sample Parts List Contents output is shown below:

Parts List: EXAMPLE-PRODUCT			Rev: 1	
Created:	10/Mar/2009	Notes:		
Description:	Speed Controller Box			
Cost:	79.337			
Date Costed:	10/Mar/2009			
Part Number	Description	Quantity	Cost	Ref
	Sub-Assemblies			
EXAMPLE-SUB1	Speed controller bridge assembly	1.00	3.433	
EXAMPLE-SUB2	FET controller	1.00	4.516	
EXAMPLE-SUB3	Switch Assembly	1.00	2.024	
EXAMPLE-SUB4	Terminal Block assembly	1.00	1.869	
EXAMPLE-SUB5	Speed Control PCB with LEDs & Cables	1.00	24.879	
FS36P	10mm Insulated Spacer	1.00	0.183	

Character Increases from 100 to 255

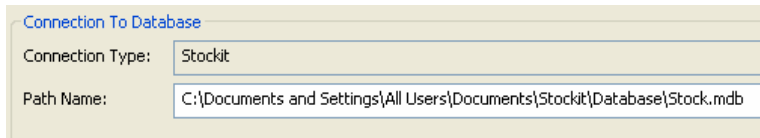
The size of the Ref field in Parts Lists has been increased from 100 to 255 characters. The increase will be automatically performed when you run your existing database in the Version 1.6.

Connection to the Pulsonix PCB Design System

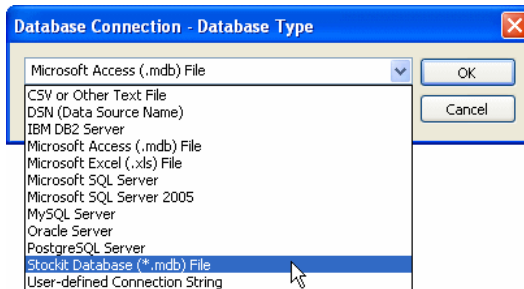
You can now connect Stockit to Pulsonix using the Pulsonix Database Connection option. Using the Attribute fields, you can add Component information to the Stockit database to make your stock records more meaningful. Information such as tolerance, height, wattage, value etc, can be added to the stock item (Part).

How to connect the PDC to a Stockit database

From the **Connection To Database:** options, you need to select the connection type and path to the database.

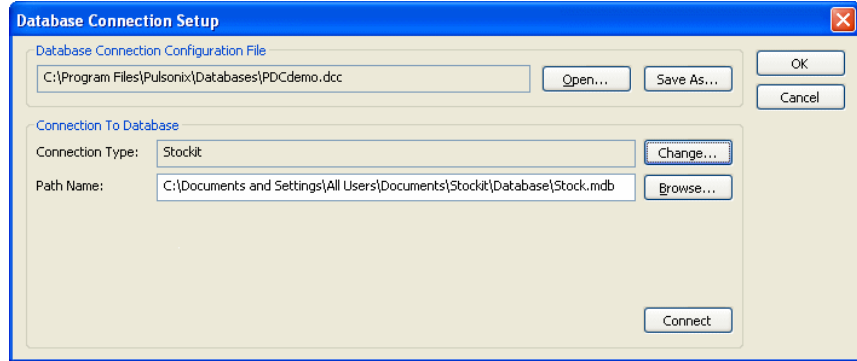


Next to the **Connection Type:** box, select the **Change** button. From the drop down list, select **Stockit Database (*.mdb) file** option.



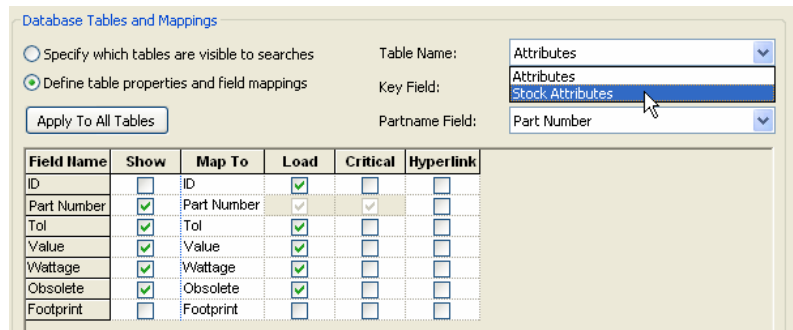
Now select the Stockit database using the **Browse** button to locate it.

Once the database type and location have been established, you will automatically be connected to the database and the relevant tables and fields will be setup automatically. Although you can, if you wish to, restrict which Stockit attributes are copied into your Pulsonix design.

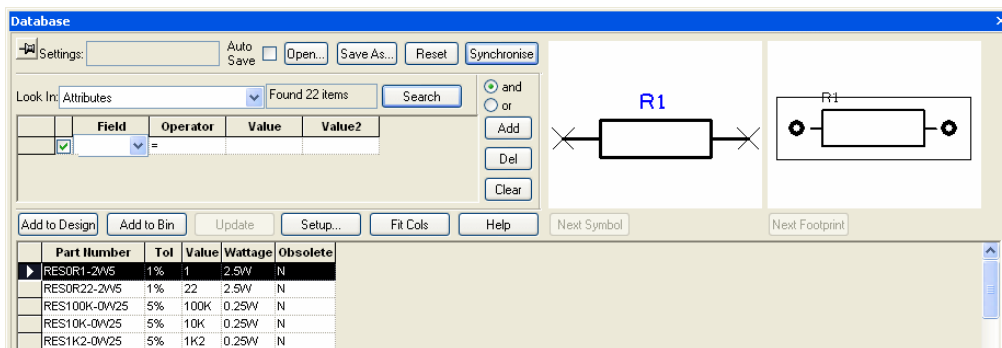


The connection option will display the **Database Tables and Mappings** options. On **Table Name:** select either the **Attributes** or **Stock Attributes** tables depending on your preference of operation. Attributes gives you access to the part number and attributes names/values you have defined. Stock attributes additionally gives you access to the fields defined for the Stock table (except for the three user-defined fields).

Use the mappings to define what you wish to use for Pulsonix search fields in the PDC.



The PDC searcher will now display the fields available for searching:



Extracting Attributes

Attributes and stock values from Stockit can be passed into a Pulsonix design. You can verify which attributes have been used by selecting a component in the design and viewing its **Comp Attribute Properties**.

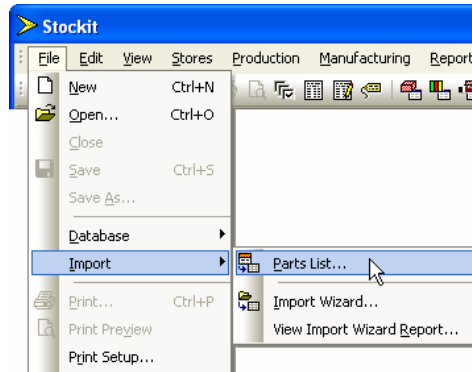
Once in the design, attributes can be extracted using the normal **Report Maker** mechanism.

Creating Stockit format Parts Lists from Pulsonix

In order to run Stockit through a complete purchase cycle, you must create a Stockit Parts List. This is used to pull stock items from the Stockit database and process them using the Stockit option available.

Once in the design, attributes can be extracted using the Pulsonix **Report Maker** mechanism. They can also be compared against their original values in the database using the Pulsonix **Check/Update Against Database** mechanism.

When run, this will create a CSV file suitable for Stockit. To load this into Stockit, from the **File** menu, **Import**, from the sub-menu, select **Parts Lists**.



Import your parts list; this will then appear on the **Parts Lists form** in Stockit with a corresponding entry in the Stock form.